

Camp Indian Springs



-
- This camp has been the go-to over-night camp for old Tallahassee families for 65 years. The camp was started by a Tallahassee family, Betty Palmer and Odette Marshal and their families who built the camp from a dense forest with the jewel of Indian Springs in the middle Betty Palmer and Odette Marshal, who were involved with the FSU athletics department and used the camp for team retreats and circus training as well as operating it as a small, private summer camp. . In 1975, the Capital Region YMCA bought Camp Indian Springs from private owners.
 - Run by the YMCA for four decades, the camp is place of nostalgia for many Florida Big Bend and South Georgia region families.
 - Located Six Miles South of Tallahassee City Boundary in Wakulla County.
 - Seventy-seven forested acres.
 - 5 camp administration buildings – registration, infirmary, laundry building, art creation building and counselor recess building.
 - 1 large dining hall with large camp fireplace and full kitchen.
 - 11 cabins that sleep 10 to 16 – screened-surround with wooden shutters and indoor electric lights and overhead fans.
 - 24-stall, horse barn with concrete floors and an attached five-room living quarters.
 - Two bathroom/shower buildings
 - Low and High Ropes Challenge Courses.
 - Large Circular fire pit with log seating and stage.
 - Two Large scale onsite septic systems.

Contact Broker John “Al” Russell at 850-508-4242 or
Sales Associate Colleen Castille 850-566-5791

Terra Conservation Group
1400 Village Square Blvd #3-302,
Tallahassee, FL 32312

Camp Indian Springs

Offered for \$900,000.00

70 Acres of forested lands with a $\frac{3}{4}$ mile spring run.



Beautiful view of the springhead flow into the spring run which connects to Wakulla Springs State Park.

Camp Indian Springs pool is about 185 feet in diameter with a depth of about 30 feet. The tunnel entry is at the foot of the dock above and extends to about 60 feet. The spring run is about 50 feet in width and runs 1 to 2 feet deep on the surface for .7 miles to Sally Ward Springs. Sally Ward Springs has a groundwater connection to Wakulla Springs. Private Dive Groups have long dived and charted tunnels leading 188 feet to Sally Ward Spring on Wakulla Springs State Park property. Guided tours only are allowed

Contact Broker John "Al" Russell at 850-508-4242 or
Sales Associate Colleen Castille 850-566-5791

Terra Conservation Group
1400 Village Square Blvd #3-302,
Tallahassee, FL 32312

Camp Indian Springs



The view of the dining hall when coming across the bridge from the spring beckons during hot summer when the cool of the hall awaits on the shady porch as well as in the air conditioned dining area. In winter, wisps of smoke from the stone chimney tell of warmth and comradery.

Interior Dining Hall

The dining hall holds 150 people comfortably. A separate kitchen area is large enough to prepare meals for all.



The hall is suitable for dining, dancing, rockin' out, as well as for quiet retreats.

Contact Broker John "Al" Russell at 850-508-4242 or
Sales Associate Colleen Castille 850-566-5791

Terra Conservation Group
1400 Village Square Blvd #3-302,
Tallahassee, FL 32312

Equestrian Facilities

On the north side of Bloxham Cutoff (S.R. 267) are the accoutrements of the riding life....

A 24-stall horse barn with a 5 room living quarters attached. A fully lighted central arena within. Two fenced paddocks and water pumps



Center arena currently staged for extreme skateboard events.

Contact Broker John "Al" Russell at 850-508-4242 or
Sales Associate Colleen Castille 850-566-5791

Terra Conservation Group
1400 Village Square Blvd #3-302,
Tallahassee, FL 32312

Camp Facilities

All original buildings are constructed of pine and nearly indestructible.

Dining hall and two sleeping cabins are new buildings.

Laundry and Infirmary are seen below.



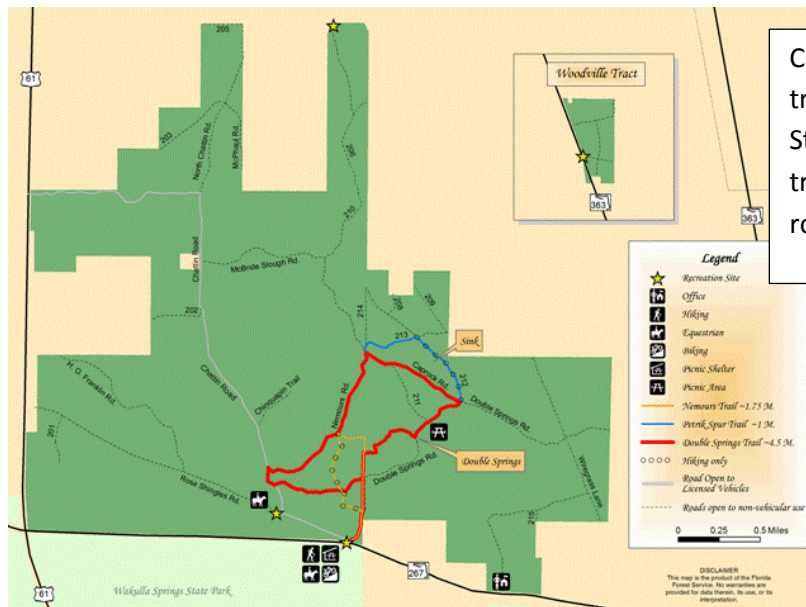
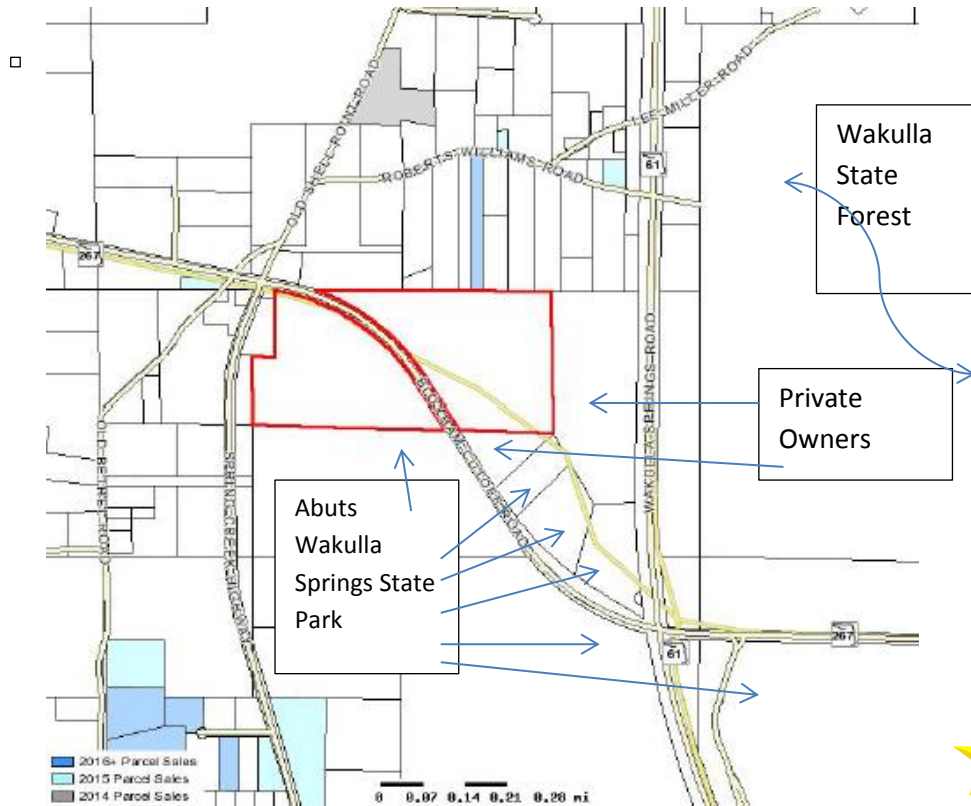
View of sleeping quarters – Camp Indian Springs booked 176 campers for 10 weeks in summer.



Contact Broker John “Al” Russell at 850-508-4242 or
Sales Associate Colleen Castille 850-566-5791

Terra Conservation Group
1400 Village Square Blvd #3-302,
Tallahassee, FL 32312

The yellow star indicates the same intersection on the two maps below.



Camp Indian Springs lies in trotting distance to Wakulla State Forest, a 4,800-acre tract of winding trails and a robust hunting season.



Contact Broker John "Al" Russell at 850-508-4242 or Sales Associate Colleen Castille 850-566-5791

Terra Conservation Group
1400 Village Square Blvd #3-302,
Tallahassee, FL 32312